



ENGINEERING **COMPANY** **PROFILE 2025**

Engineering Excellence for a Better Tomorrow

Address: 182 Derby Drive, Northriding, 2169

Telephone: +27 81 500 1595

Website: www.optimumconsultants.co.za



ABOUT OUR **COMPANY**

A Brief Story About The Company

Optimum Engineering is a leading engineering services firm based in Johannesburg, South Africa. We provide expert mechanical, civil, and electrical engineering solutions to clients across various industries. Our team of highly skilled engineers and technicians is dedicated to delivering innovative, efficient, and cost-effective solutions that meet our clients' specific needs.

Vision

At Optimum Engineering, our vision is to be recognized as the premier provider of innovative engineering solutions in Johannesburg and beyond. We aspire to lead the industry by consistently delivering exceptional quality, sustainable designs, and unparalleled expertise across mechanical, civil, and electrical engineering disciplines. Through our commitment to excellence and client-centered approach, we aim to contribute significantly to the development of thriving, resilient communities and infrastructure.

Mission



Our mission at Optimum Engineering Consultants is to leverage our expertise in mechanical, civil, and electrical engineering to create innovative solutions that enhance the efficiency, sustainability, and safety of infrastructure projects.

We are committed to integrity, professionalism, and continuous improvement in everything we do. By embracing innovation and environmental stewardship, we contribute positively to the development and well-being of our communities.

We strive for excellence in design, execution, and project management, ensuring the success of each endeavor. Optimum Engineering Consultants is dedicated to fostering a culture of creativity, diversity, and sustainable development.

We aim to solve complex challenges with efficiency and ingenuity, utilizing advanced technology and industry best practices. By prioritizing customer satisfaction, ethical conduct, and continuous learning, we aim to make a positive impact on society and the environment.



Our Core VALUES

1 Excellence

We strive for excellence in all aspects of our work, aiming to deliver superior engineering solutions that meet the highest standards of quality, innovation, and efficiency.

2 Integrity

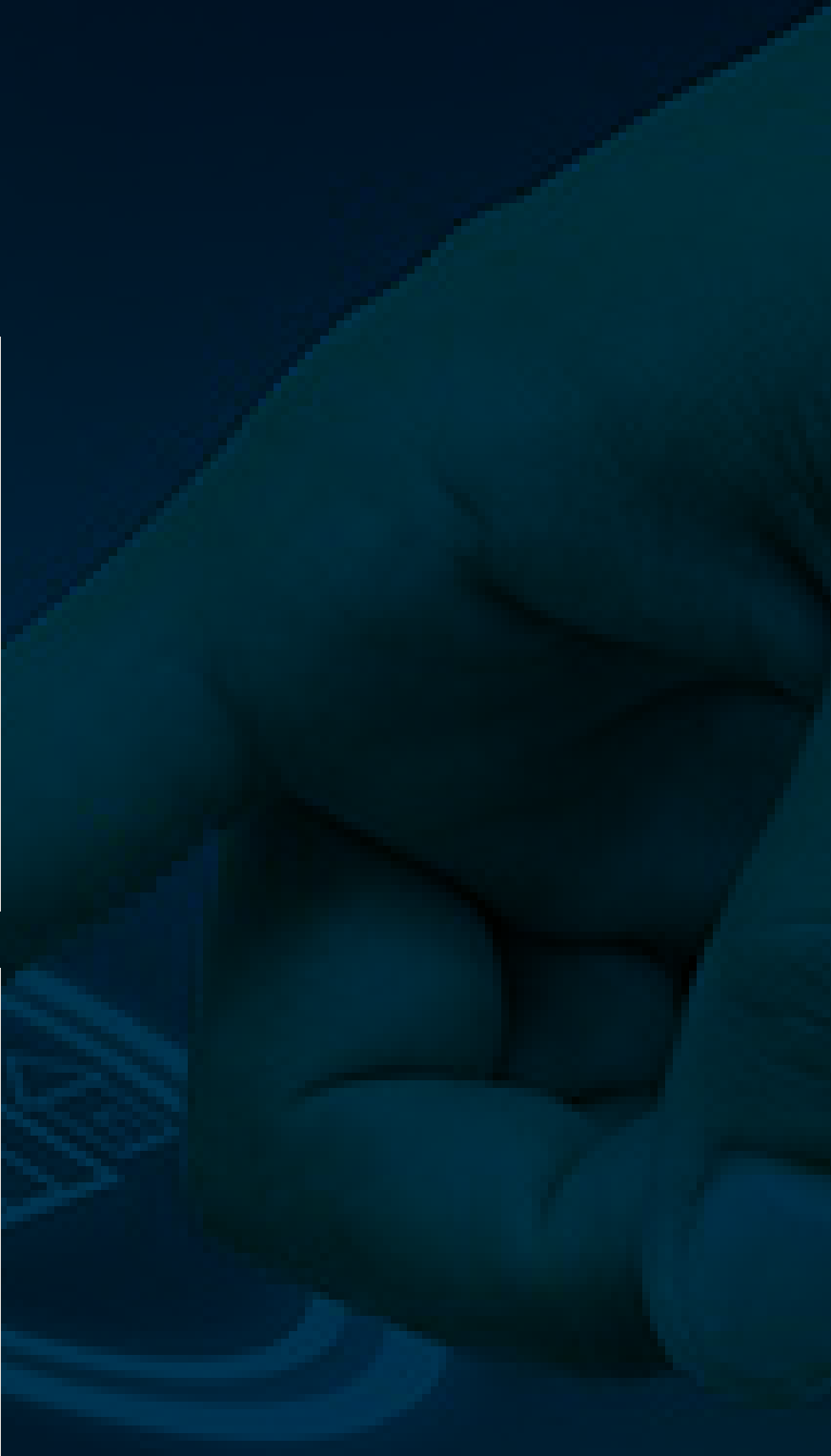
Explain your the most powerful factor to define how the company daily operations can be done. Most of people often explain the key factor depends on the primaries and secondaries products/services data

3 Collaboration

We believe in the power of collaboration and teamwork. By fostering open communication, respect, and shared knowledge, we achieve collective success and deliver optimal outcomes for our clients.

4 Sustainability

We are committed to promoting sustainable practices in our engineering solutions. By integrating environmental considerations and promoting resource efficiency, we contribute to a greener and more resilient future.



OVERVIEW

Optimum Engineering was founded in 2016 as a private company with the mission of being an engineering consulting and contracting firm structured in a way to afford personal involvement from its directors and associates, not only on all its projects, but also to maintain direct personal contact with its clients. It is firmly believed that this will enable the firm to deliver a dynamic service to clients, with the added assurance that their interests are well looked after by the stakeholders of the company.

Optimum as a contracting company has the following contracting (CIDB) ratings.

- 6EP - Electrical Engineering Works – Infrastructure
- 6SI - Lifts, escalators, and travellators (installation, commissioning, and maintenance)
- 6GB – General Building
- 6ME - Mechanical Engineering
- 1SF - Fire prevention and protection systems
- 6CE - Civil Engineering
- 6EB - Electrical Engineering Works – Building
- PE - Potentially Emerging
- 2SQ - The development, extension, installation, repairs, dismantling of precast walls, installation of wire perimeter fencing, diamond perimeter fencing, palisade steel fencing with posts and stay at intervals.

The company is in the process of upgrading the grades.

Our code of conduct complies with the Engineering Council of South Africa's (ECSA) Board Notice 66 of 1991 (Rules in terms of the Engineering Profession of South Africa). The company's competitive edge is based on quality, capacity, and service delivery on a life cycle basis. Costs do not play a major role as these are set by ECSA, CESA (Formally SAACE), SABTACO, etc

PROFESSIONAL INDEMNITY INSURANCE

Optimum Engineering has Professional Indemnity Insurance Cover.

Name : AON Professional Risk Services
Insurers : Stalker Hutchison Admiral Underwriters for and on behalf of Santam Ltd

Period of Insurance : 14 January 2024 to 13 January 2025 (both days Inclusive)

Retroactive Date : 14 January 2020

Limit of Indemnity : R 10 000 000.00 each and every claim



TRADE & OTHER ACTIVITIES

- Supply and installation of mining equipment, repair, and repair parts eg pumps(thermal oil, water etc), alternators, crushers, inverters, bushes, SER drives, Transformers, Transformer oil testing, slip rings etc (Mainly Zimplants, Bissa Gold in Burkina Faso)
- Logistics - 34T trucks
- Skimmed milk supply
- e-Learning Platform deployment and installations

THE TEAM

The personnel at Optimum Engineering Cc have a track record in managing major projects and providing project management services as part of a client's team. We can lead a multi-disciplinary group, assume a full programme management role, and join a client organization on secondment for lengthy complex projects. The Team consists of registered professional Engineers, Technologists, Technicians, Draught technicians, and Project Managers positioned to provide customised services to all our clients

Dakarai P. MANJONJO

Director

Bachelor of Science (Hons) in Electrical Engineering (UZ); Candidate Engineering Technologist (ECOSA); MBA (University of Nicosia); Certificate in Project Management (UNISA), Member South African Institute of Electrical Engineers (SAIEE), Electrification Design (Bentley V8))

Noble MUROMBA, Pr. Eng

Technical Director

Professional Engineer (ECOSA); Bachelor of Science (Hons) in Electrical Engineering (UZ); Member South African Institute of Electrical Engineers (SAIEE),

Innocent MATONHODZE, Pr. Eng

Senior Electrical Engineer

Professional Engineer (ECOSA); Bachelor of Science (Hons) in Electrical Engineering (UZ); Member South African Institute of Electrical Engineers (SAIEE),

Timoteus Iyambo TIMOTEUS

Candidate Engineer (ECOSA)

Bachelor of Science (Hons) in Electrical Engineering (UZ)

Taz T RATSOMO, Pr. Eng (ECOSA)

Bachelor of Engineering (Hons) in Civil Engineering (University of Cape Town) DipFinMan- Member.

Prosper TSHAKALISA

Junior Consultant

Bachelor of Science (Hon) in Environmental Engineering (CUT-2020)

Marzia A. JONKER, Pr.

Town and Regional Planner

Professional Planner (SACPLAN); Bachelor of Science in Town and Regional Planning (University of Witswatersrand); Member South African Institute of Town and regional Planning(SAITRP)

Vernon KHANYASA Cand. Eng (ECOSA)

Bachelor of Engineering (Hons) in Civil Engineering (University of Zimbabwe),

THE TEAM

Taurai CHINORUMA Pr.

Arch- Senior Architect

Professional Architect (SACAP);
Bachelor of Architectural Studies
Honours Degree.

Mlondolzi NDLOVU Pr.

Tech Civil & Structural Eng

Btech Degree in Civil Engineering
(University of Johannesburg). Pr.
Tech (ECSA); Member (SAICE).

Zenzo Brenda MADAURI

Construction health and Safety Officer
(SACPCMP-2017)

Certificate in Occupational Health &
Safety, Basic Firefighting, Working
in heights and fall protection.

Victor MATUTU

Construction health and Safety Officer
(SACPCMP-2017)

Certificate in Occupational Health
& Safety (Academy of York)

Nonhlanhla P S MPHIDI

Construction health and Safety Officer
(SACPCMP-2017)

SAMTRAC Training certificate
(NOSA College), ISO 9001:2015
Certificate of competence (NOSA
College)

Ravik RAJKHUMAR, Pr Eng

Tech- Civil Engineering

Diploma in Civil Engineering, ML
SULTAN TECHNIKON (1997), BTech
Degree in Civil Engineering, Durban
Univ. of Technology 2014

Tambudzai M. GONESE

Company Secretary

Candidate - Masters in Law(LLM
Commercial, UNISA), LLB (Hons)
Bachelor of Laws Degree (UZ)

Sibusiso H. NKOSI

Legal Advisor

Bachelor of Laws (LLB) UNISA,
Legal Practice Training (Law
Society of South Africa)

Arnold T. NYAMANDE, C.A

Chief Financial Officer (CFO)

Chartered Accountant (CA),
Bachelor of Business Science
(Accounting) Monash

Nhlanhla MABASO

Financial Analyst

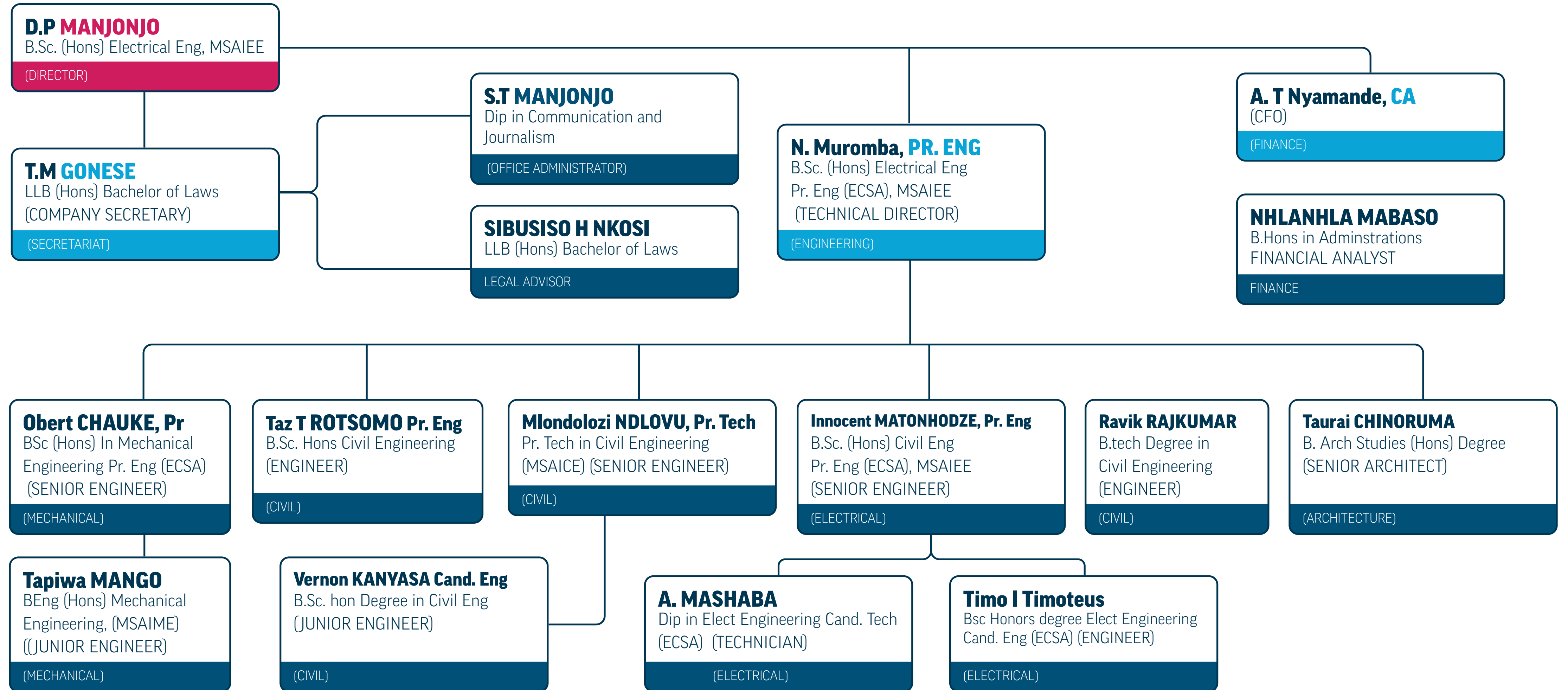
B. Honours in Administrations,
Economics and Development, Post
Graduate Diploma In Policy
Studies

Tapiwa MANGO , Cand. Eng

Mechanical

Bachelor of Engineering in
Mechanical Engineering,(Coventry
University,UK)

ORGANOGRAM



COMPANY DETAILS

Registration No : 2016/357860/07
Income Tax Ref No : 9407514182
CSD Supplier No : MAAA0636011

ADDRESSES :

Office : office 1016 HQ complex 2nd floor tower B,
Northlands corner
Cnr Witkoppen and New market Roads
North riding, GAUTENG, 2169

CONTACT DETAILS :

Tel : +27 81 500 1595
Cell : 078 309 4118 or 0735174420
E-mail : info@ptimumconsultants.co.za
E-mail(2) : optimumengineeringconsultants@gmail.com

BANKING DETAILS:

Account Name : Optimum Engineering
Consultants Cc
Bank : First National Bank
Account Type : Cheque
Branch : Festival Mall
Branch Code : 231433
Account No. : 62685136428

COMPANY CAPACITY AND RESOURCES

HARDWARE & EQUIPMENT:

| ITEM | DESCRIPTION | QUANTITY |
|----------------------|----------------------------|----------|
| Computer | Acer Desktop | 1 |
| Laptops | ACER Aspire E 15, Dell, HP | 4 |
| Printer, Fax Machine | HP Laser Jet Pro CM1415 | 1 |
| Plotter | Cannon iPF 750 | 1 |

SOFTWARE:

Microsoft Office (complete with Microsoft Project package)
Adobe Reader 9
AutoCAD 2011, 2014, 2015
SolidWorks 2010
MATLAB
Micro-Station
DIgSILENT Power Factory 15.0.0
Civil Designer

VEHICLES:

Toyota Fortuner 2008
Audi TFSI, 2014
Toyota Camry SE220i
BMW 435i
Mercedes Benz C280
Jeep Wrangler 3.8L Unlimited

OTHERS:

Telephone
Access to the Internet (For e-mails, etc)

OUR SERVICES

01

MECHANICAL ENGINEERING

Design, development, and installation of mechanical systems, machinery, and equipment.



02

CIVIL ENGINEERING

Design, development, and construction of infrastructure projects, including roads, bridges, buildings, and water treatment plants.



03

ELECTRICAL ENGINEERING

Design, installation, and commissioning of electrical systems, including power generation, transmission, and distribution.



04

PROJECT MANAGEMENT

We manage projects from conception to completion, ensuring timely delivery, budget adherence, and quality assurance.



WHAT WE DO

Optimum Engineering provides comprehensive and innovative engineering services encompassing mechanical, civil, and electrical disciplines, delivering tailored solutions that prioritize quality, efficiency, and client satisfaction.

OUR SERVICES

05

CHEMICAL / PROCESS ENGINEERING

We labs mix chemicals for water treatment works. We design, implement and maintain water treatment works.



06

MINING

We supply and maintain maining equipment



07

LIGHTNING PROTECTION

Design, installation, and commissioning of lightning protection systems



08

LIFTS & ELEVATORS

Design, installation, and commissioning of lifts and elevators



Mechanical Engineering Services

- Our mechanical engineering services include:
- Design and analysis of mechanical systems and components
- Prototyping and testing of mechanical structures
- HVAC (Heating, Ventilation, and Air Conditioning) system design
- Industrial machinery design and optimization

Design and Development

We design and develop mechanical systems, machinery, and equipment for various industries.

Installation and Commissioning

We install and commission mechanical systems, ensuring seamless integration and optimal performance.

Maintenance and Repair

We install and commission mechanical systems, ensuring seamless integration and optimal performance.

Civil Engineering Services

Our Civil Engineering services include:

- Structural design and analysis for buildings, bridges, and infrastructure projects
- Site evaluation, surveying, and geotechnical investigations
- Construction management and supervision Environmental impact assessments and sustainable design solutions



Design and Development

- We design and develop infrastructure projects, including roads, bridges, buildings, and water treatment plants.

Construction

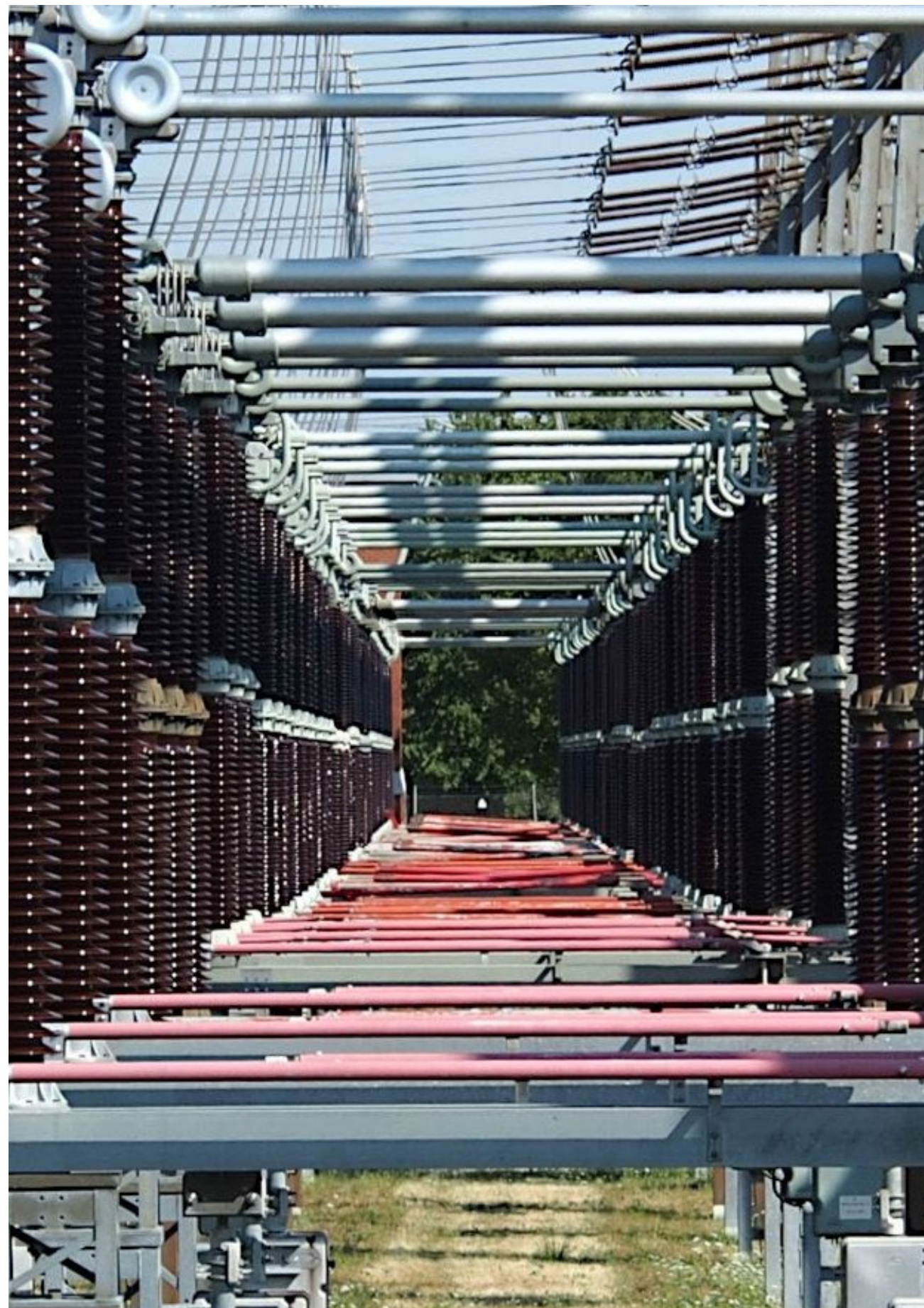
- We construct infrastructure projects, ensuring timely delivery and quality assurance.

Project Management

- We manage infrastructure projects from conception to completion, ensuring timely delivery, budget adherence, and quality assurance.

Electrical Engineering Services

Our Electrical Engineering services include:



- Power system design and analysis Lighting design and control systems
- Renewable energy solutions (solar, wind, etc.) Automation and control system integration

Design and Development

- We design and develop electrical systems, including power generation, transmission, and distribution.

Construction

- We install and commission electrical systems, ensuring seamless integration and optimal performance.

Project Management

- Our maintenance and repair services ensure optimal equipment performance, minimizing downtime and extending asset lifespan.



Earth and Lightning Protection

Our Lightning Protection Services:

- Lightning Protection system design
- Earthing of solar, generators and all electrical installations



Design and Development

- We design and develop electrical systems, including power generation, transmission, and distribution.

Construction

- We install and commission lightning protection systems, ensuring seamless integration and optimal performance.

Project Management

- Our maintenance and repair services ensure optimal equipment performance, minimizing downtime and extending asset lifespan.

Lifts and Elevators

Our Lifts and Elevators services include:

- Lifts and system design
- Manufacturing



Design and Development

- We design and develop Lifts and Elevators.

Construction

We install and commission Lifts and Elevators , ensuring seamless integration and optimal performance.

Project Management

- Our maintenance and repair services ensure optimal equipment performance, minimizing downtime and extending asset lifespan.

Chemical Engineering

Optimum Labs also has an in-house specialist dedicated to addressing water-related challenges. Our services include:

- Complete water analysis and treatment solutions
- Supply of meters, test strips, test kits, DPD tablets, and pillow sachets
- Manufacturing of a variety of flocculants, coagulants, and pH adjustment chemicals
- Production of raw materials for flocculants and coagulants
- Facilities to analyse water and design suitable flocculants for reuse or safe disposal

Aluminium sulphate, calcium hypochlorite, anionic polyacrylamide, cationic polyacrylamide, chlorine lime, ferric chloride solution 44%, flocculants (Polyelectrolytes) Non-Anionic Polyacrylamide, polyaluminium chloride (PAC), sodium chlorite and many more

CNS solutions (calcium nitrate 55% solutions, ferric chloride, caustic lye, 25% sulphuric acid, 50% citric acid, 50% potassium hydroxide, zinc nitrate, 50% zinc chloride, 25% nickel sulphate, 23% nitric acid, 60% hydrochloric acid, 33% and many more (technical support available for custom made solutions)

Copper sulphate pentahydrate, sodium sulphate, zinc sulphate, sodium nitrate, sodium cyanide, ammonium nitrate, PAC, aluminium sulphate, nickel sulphate, nickel chloride, mercuric chloride, mercuric sulphates, Lead acetate, sodium chloride and many more

Organic bulk chemicals

Ethanol, MIBK, chloroform, methanol, Toluene, Hexane, Methylamine and many more

[14:19, 28/08/2025] Taz Ratsomo: Hygiene and facility management chemicals

Optimum provides products for Industrial and domestic use and raw materials for manufacturing of hygiene products (soaps, detergents, sulphonic acids, etc) we supply bulk hygiene and facility management chemicals which include (weedkillers, pesticides, insecticides, fungicides, grease removers, surface sanitizer and many more

Optimum also provide a variety of crop protection from different agents including pests, weeds, plant disease and other organisms that cause damage to the agricultural crops. We also provide fertilisation and raw materials for fertilisers including calcium nitrate solution (CNS) 55%, Ammonium nitrate, Potassium nitrate and many more

For animal protection, we provide chemical such as:

Bid tickened
Bid tik & flea

Supply and Maintenance

We supply and maintain mining equipment ranging from:

- Transformers
- Cables
- Motors
- Bulk handling equipment
- Pumps
- Brushes
- Sliprings
- Pring clips

Design and Development

- We install and commission mining equipment ensuring seamless integration and optimal performance.

Construction

- Our maintenance and repair services ensure optimal equipment performance, minimizing downtime and extending asset lifespan.

Project Management

- Our maintenance and repair services ensure optimal equipment performance, minimizing downtime and extending asset lifespan.





Our Expertise



Our team of highly skilled engineers and technicians has extensive experience in:

LIFTS & ELEVATORS

We supply install and maintain lifts / elevators.

GENERATORS

We supply install and maintain Generators.

SOLAR SYSTEMS

We design, supply, install and maintain solar PV systems.

MASTER PLANS

We do both national and municipality masterplans.

WATER TREATMENT WORKS

We design, construct and maintain WWTW. Our lab supplies chemicals for WTW and WWTW.

LIGHTNING PROTECTION

We design, install and maintain Lightning Protection systems.

MINING

We supply, install and maintain mining equipment across Africa.

TRANSACTIONAL ADVISORY SERVICES

We offer Transactional Advisory Services, at municipal, district and provincial level.

SERVICE OVERVIEW

Mechanical Engineering Services

- **Design and Analysis:** Our mechanical engineering experts provide detailed design and analysis services for a variety of mechanical systems and components, ensuring optimal performance and efficiency.
- **Prototyping and Testing:** We offer prototyping and testing services to validate designs and optimize functionality, ensuring robust and reliable products.
- **HVAC System Design:** Optimum Engineering designs customized HVAC (Heating, Ventilation, and Air Conditioning) systems tailored to the specific requirements of buildings and industrial facilities.
- **Industrial Machinery Design:** Our team specializes in the design and optimization of industrial machinery, enhancing productivity and operational efficiency.

Civil Engineering Services

- **Structural Design and Analysis:** We provide comprehensive structural design and analysis services for buildings, bridges, and infrastructure projects, ensuring structural integrity and safety.
- **Site Evaluation and Surveying:** Optimum Engineering conducts site evaluations and surveys to gather essential data for project planning and development.
- **Construction Management:** We offer construction management services to oversee project execution, ensuring adherence to timelines and quality standards.
- **Environmental Impact Assessments:** Our team conducts environmental impact assessments and develops sustainable design solutions to minimize ecological footprints.

Electrical Engineering Services

- **Power System Design and Analysis:** Optimum Engineering specializes in power system design and analysis, ensuring reliable and efficient electrical distribution.
- **Lighting Design:** We provide innovative lighting design solutions for residential, commercial, and industrial spaces, focusing on energy efficiency and aesthetics.
- **Renewable Energy Solutions:** Our experts design and implement renewable energy systems, including solar and wind power solutions, to promote sustainability and reduce reliance on traditional energy sources.
- **Automation and Control System Integration:** We offer automation and control system integration services to enhance operational efficiency and optimize processes.

Certifications **and** Accreditations

OUR PROFOUND BELIEFS



SAIEE (South African Institute of Electrical Engineers)

SAIEE membership and certification signify Optimum Engineering's expertise and involvement in electrical engineering. Membership in SAIEE provides access to industry knowledge, networking opportunities, and professional development resources specific to electrical engineering.



Saimeche (South African Institution of Mechanical Engineering)

Saimeche membership and registration validate Optimum Engineering's proficiency and dedication in mechanical engineering. Being part of Saimeche connects Optimum Engineering with a network of mechanical engineering professionals and promotes continuous improvement within the field.



ECSA (Engineering Council of South Africa)

ECSA registration is essential for engineers practicing in South Africa. It demonstrates Optimum Engineering's compliance with professional standards and ethical practices set by ECSA, ensuring credibility and accountability in engineering services.



ECA (Electrical Contractors Association)

ECA membership and accreditation highlight Optimum Engineering's adherence to industry standards and best practices in electrical contracting. Being part of ECA signifies a commitment to quality, safety, and professionalism in electrical engineering projects.



CIDB (Construction Industry Development Board)

CIDB registration is mandatory for construction contractors in South Africa. Optimum Engineering's CIDB registration allows participation in government-funded projects and showcases compliance with construction industry regulations and standards.

PROJECTS

LIST OF PROJECTS

LIFT/ELEVATOR INSTALLATIONS

| No | PROJECTS | CLIENT | ROLE | PROJECT VALUE | STATUS | REFERENCE |
|----|---|--|---|-------------------------|---------------------|---|
| 1 | Replacement of the existing passenger lift/elevator with a passenger lift/elevator (KONE N Monospace DX) at Kildrummy Office Park in Paulshof, Johannesburg | Sitehill Projects/ Kildrummy Office Park Management | Design, Supply, Install and Maintenance for 12 months | R950 000.00 incl. VAT | Complete (Dec-2020) | Mr J. Dube 0112340711/0625228731 jabulani@aesconsulting.co.za |
| 2 | Supply & Installation of a Pharmacy Hoist/Dumb waiter at Far East Rand Government Hospital- RFQ11/06/2017 | Gauteng Department of Infrastructure Department | Design, Supply, Install and Maintenance for 12 months | R 795 785 (VAT excl) | Complete | Mr T. Taruvinga 011 891 6669/076 945 0942 Tawanda.taruvinga@gauteng.gov.za |
| 3 | Supply and installation of a 630kg passenger lift at the psychiatric ward at Helen Joseph Hospital - RFP23/07/2017 | Gauteng Department of Infrastructure Department | Design, Supply, Install and Maintenance for 12 months | R1 289 700 (VAT Excl). | Complete | Mr T. Taruvinga 011 891 6669/076 945 0942 Tawanda.taruvinga@gauteng.gov.za |
| 4 | Fix and supply of a Pharmacy hoist/dumb waiter in the psychiatric ward at Charlotte Maxeke Academic Hospital - RFP16/06/2017 | Gauteng Department of Infrastructure Department | Design, Supply, Install and Maintenance for 12 months | R 795 785 (VAT excl). | Complete(Sep-2018) | Mr T. Taruvinga 011 891 6669/076 945 0942 Tawanda.taruvinga@gauteng.gov.za |
| 5 | Supply, Delivery and Installation of 2x Elevators at Tshwane Regional Offices | Gauteng Department of Infrastructure Department | Design, Supply, Install and Maintenance for 12 months | R 2 000 785 (VAT excl). | Complete | Mr T. Taruvinga 011 891 6669/076 945 0942 Tawanda.taruvinga@gauteng.gov.za |
| 6 | Supply, installation and maintenance of 2 x passenger and goods lifts at Ikhaya Lethemba Building- PURCHASE ORDER NO. 4550248988 | Gauteng Department of Community Safety | Design, Supply, Install and Maintenance for 12 months | R 2 380 500 (VAT Excl) | Complete | Thengo Mthembu 060 980 8659 Thengo.Mthembu@gauteng.gov.za |

BUILDING PROJECTS (ELECTRICAL & MECHANICAL)

| No | PROJECTS | CLIENT | ROLE | PROJECT VALUE | STATUS | REFERENCE |
|-----------|---|--|-------------|---------------|----------------------------|---|
| 1 | Renovations of 8 storm damaged schools in KZN | DBSA via Linked Thoughts Consulting | Design & PM | R 912 900 | Complete | Mr R M. Rakgogo 082 952 5315 |
| 2 | Management Plan to Reduce Non-Revenue Electricity for Abaqulusi Municipality | DBSA via AES Consulting | Design & PM | R 648 000 | Complete | Desire Sibanda, 065 883 1531 Tel: +2781 568 6000 |
| 3 | Langjan Nature Reserve | Linked Thoughts Consulting for Limpopo Provincial Government | Design & PM | R6,000,000 | Complete | Mr R M. Rakgogo 082 952 5315 |
| 4 | New Residential Development (135 stands): Ivydale Plot 114, Polokwane | Linked Thoughts Consulting | Design & PM | R4,298,000 | In Progress (Construction) | Mr R M. Rakgogo 082 952 5315 |
| 5 | New Residential Development: Portion 77&78 Haakdoornboom (1014 Ervens), Soshanguve, | Linked Thoughts Consulting | Design & PM | R41,091,324 | Planning | Mr R M. Rakgogo 082 952 5315 |
| 6 | Replacement of lifts at 3 government hospitals | GDID | Design & PM | R1,300,000 | Complete | Mr T. Taruvinga 079 311 7674 |
| 7 | Assessment of Eskom's EFM's Report | DIGES on behalf of ESKOM | Design & PM | R328 000 | Complete | Ms B. Makanza 082 075 6685 |
| 8 | Upgrade of Wolverton Railway Station | PRASA | Design & PM | R1,785,000 | Complete | Mr M. Sambo 073 526 0940 |
| 9 | Upgrade of 13 PRASA Electrical Depots | PRASA | Design & PM | R26,000,000 | Complete | Ms B. Sinama 011 773 1760 |
| 10 | Construction of a Workshop – Katlehong Campus | Ekurhuleni West College | Design & PM | R3,600,000 | Complete | Mr R. Masebe 083 344 6206 |
| 11 | Upgrade of Morokweng Police Station | Department of Public Works | Design & PM | R1,7340,000 | Complete | Mr J. Dube 062 522 8731 |
| 12 | Power Factor Correction at Modjadji Plant | Lepelle Northern Water | Design & PM | R500,000 | Complete | Ms R. Maphalle 082 972 3253 |
| 13 | 3 Masterplans for 3 Municipalities | MISA | Design & PM | R3,675,000 | Complete | Ms K. Chikwanda 078 719 3976 |

ELECTRIFICATION PROJECTS

| No | PROJECTS | CLIENT | ROLE | PROJECT VALUE | STATUS | REFERENCE |
|----------|--|---------------------------------|-----------------------------|--------------------|-------------|--|
| 1 | NTN-SMC 88kV line diversion at Tailings Dam, Zimbabwe | Zimplants-ZESA | Turnkey (Design& Construct) | R 6,119,101 | In Progress | Edwin Matara +263774 164 825 Edwin.matara@zimplants.com |
| 2 | 66kV Powerline from Iota to Bakone Substations | Polokwane Municipality | Design & PM | R3,400,000 | In Progress | Mr W. Wedelinghuys 083672 6887 |
| 3 | Electrification of Matoks Village | Capricorn District Municipality | Turnkey | R2,000,000 | Complete | Mr K. Phaswana-015 294 1000 |
| 4 | Electrification of Sekakene & Botlokwa Boreholes | Capricorn District Municipality | Turnkey | R1,900,000 | Complete | Mr K. Phaswana-015 294 1000 |
| 5 | Electrification of Lwamondo-Tshidzete Village | Thulamela Local Municipality | Design & PM | R3,400,000 | Complete | Mr Municipality. Dzivhani 015 962 7556 |
| 6 | Electrification of Mahlokeng Village | Lepelle-Nkumpi Municipality | Design & PM | R1,200.000 | Complete | Mr A. Chaminuka-015 633 4500 |
| 7 | Refurbishment of the Karoo Desert National Botanical Gardens Solar PV System | SANBI | Design, PM and Construction | R 6 000 000 - 00 | In Progress | Amjad Hendricks +27 21 799 8420 / +27 79 523 4440 |
| 8 | Matlala Substation and Alpha to Matlala 66kV line | Polokwane Municipality | Design and PM | R 150 000 000 - 00 | In Progress | Rofhiwa Ravele +27 (86) 531 6143 +27 (15) 290 2239 |
| 9 | Extension of Alpha Feeder bays | Polokwane Municipality | Design and PM | R 24 000 000 - 00 | In Progress | Rofhiwa Ravele +27 (86) 531 6143 +27 (15) 290 2239 |

BUILDING PROJECTS (ELECTRICAL & MECHANICAL)

| No | PROJECTS | CLIENT | ROLE | PROJECT VALUE | STATUS | REFERENCE |
|-----------|---|-----------------------------|-------------|-------------------|-------------|-------------------------------|
| 14 | Refurbishment of Kliptown Multipurpose center | JDA | Design & PM | R 180 000 000 -00 | In Progress | Mr Levi Kamanga 0826976492 |
| 15 | Mayfair PEU | JDA | Design & PM | R 30 000 000 -000 | In Progress | Mr Levi Kamanga 0826976492 |
| 16 | Refurbishment of VK Ablutions | University of Limpopo | Design & PM | R 14 000 000 - 00 | In Progress | Mr Levi Kamanga 0826976492 |
| 17 | Refurbishment of MBL student Residence | University of Limpopo | Design & PM | R 50 000 000 -00 | In Progress | Mr Levi Kamanga 0826976492 |
| 18 | Refurbishment of Kliptown Multipurpose centre | JDA | Design & PM | R 180 000 000 -00 | In Progress | Mr Levi Kamanga 0826976492 |
| 19 | Ekurhuleni Master Plan | Ekurhuleni Municipality | PM | R 2 000 000 - 00 | Completed | Thasigan Chetty 0837926048 |
| 20 | Umlalazi Master Plan | Umlalazi Local Municipality | PM | R 2 000 000 - 00 | Completed | Xolani Buthelezi 072 099 9024 |

WATER TREATMENT WORKS AND WASTEWATER TREATMENT WORKS PROJECTS

| No | PROJECTS | CLIENT | ROLE | PROJECT VALUE | STATUS | REFERENCE |
|-----------|---|-----------------------------|---------------|-------------------|-------------|---|
| 14 | Refurbishment of Skukuza Wastewater Treatment works | Kruger National Park | Design and PM | R 90 000 000 -00 | In Progress | Daniel F Zhou +27 18 464 2384 Cell: 082 0444 533 |
| 15 | Refurbishment of Evaton Gardens Pump station | Emfuleni Local Municipality | Design & PM | R 30 000 000 - 00 | In Progress | Daniel F Zhou +27 18 464 2384 Cell: 082 0444 533 |
| 16 | Supply and Delivery of Water Chemical | Ngwathe Local Municipality | Supply | R 20 000 000 - 00 | In progress | Shashape Morabe 056 817 2700 |



OPTIMUM

ENGINEERING CONSULTANTS

Optimized Engineering solutions

GET IN TOUCH

Let's work together to engineer a better future!

For inquiries about our services or to discuss your engineering requirements, please contact us. Experience the Optimum Engineering advantage and let us be your trusted partner in achieving engineering excellence.

Address

182 Derby Drive, Northriding, 2169

Telephone

+27 81 500 1595

Website

www.optimumconsultants.co.za